



Today endoscopes have more
than just eyes

EndoFaster 21-42 is the medical device that integrates the endoscope making it more powerful by providing REAL TIME analysis of gastric juice

Diagnostics for *Helicobacter Pylori*

Hypochlorhydric conditions

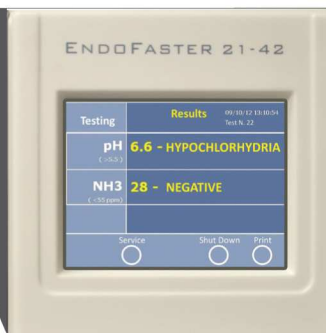
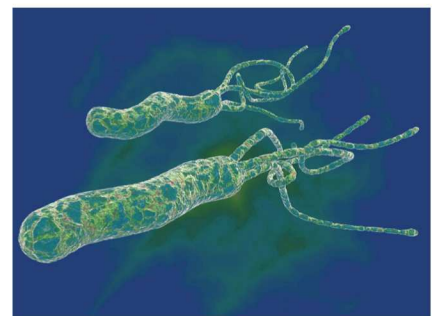
Washing and Irrigation Pump



EndoFaster 21-42 is connected between the endoscope and the vacuum system. During the initial phase of the investigation, gastric juice is suctioned and channeled to EndoFaster, which automatically analyses and processes it. After few seconds, during the normal EGD observation, EndoFaster communicates the result of test with a vocal message.

BENEFITS

- ▶ Automatic and easy to use: simplified routine procedures
- ▶ Better diagnosis with a multi-parameter approach
- ▶ Shorter duration of the investigation (15 seconds for the pH test and about 1 minute for the *Helicobacter Pylori* test)
- ▶ Less invasiveness: fewer number of biopsies
- ▶ Considerable cost reduction



USER FRIENDLY

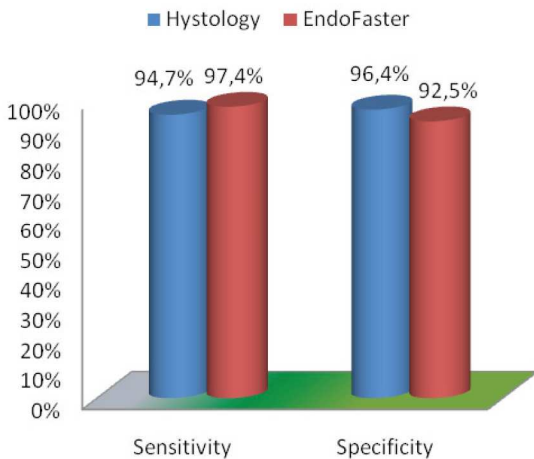
Video touch screen provides a friendly use of the device and a vocal message communicates the report



PRINTABLE REPORT

Printed reports are always provided for filing in the clinical record and downloadable onto USB pen drive

High Accuracy in H. Pylori Diagnosis



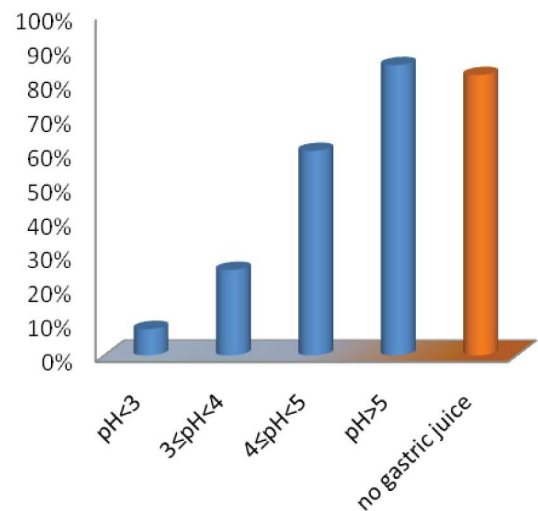
Gastric cancer is one of the most frequent causes of death from cancer in the world.

Precancerous conditions (e.g. atrophic gastritis, intestinal metaplasia and hyperplasia of endocrine cells) can develop from multiple causes, including *Helicobacter Pylori*, genetic factors and environmental factors¹.

Scientific studies² have proven that EndoFaster presents the same diagnostic performance for *H. Pylori* as a histology test in mapping six biopsies, with high sensitivity and specificity.

Correlation Between pH and Neoplastic Risk Conditions

Investigations³⁻⁴ have presented a high degree of direct correlation between pH values and the incidence of conditions entailing a neoplastic risk (i.e. glandular atrophy, intestinal metaplasia, endocrine cell hyperplasia and hypergastrinaemia). Perendoscopic pH testing of gastric juice improves and extends visual analysis to diagnose pathological preneoplastic conditions⁵. This enables both the endoscopist and the pathologist to focus on high risk patients.



EQUIPPED WITH A TROLLEY

In addition to be placed on endoscopic column, Endofaster is equipped with a convenient trolley, available with various assembly options



PERISTALTIC PUMP INTEGRATED

Endofaster is also provided of a high flow pump for irrigating and washing stomach

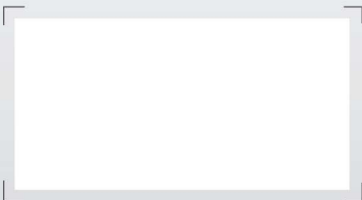
CITED REFERENCES

1. Lopez, M. et al., *Oncologia Medica Pratica*, 3rd ed., Società Editrice Universo, Roma 2010.
2. Repici, A., Strangio, G., Hassan, C., Costamagna, G., *Prospective Validation of Endofaster for a Real-Time Diagnosis of H. pylori infection During Upper Endoscopy*, IRCCS Istituto-Clinico Humanitas, Rozzano (Milano); Digestive Endoscopy Unit, Catholic University, Rome, 2011 (abstract submitted).
3. Fossmark, R. et al., *Gastric Cancer: animal studies on the risk of hypoacidity and hypergastrinemia*, *World Journal of Gastroenterology*, 2008, 14 (11):1646-1651.
4. Tucci, A. et al., *Gastric juice pH as indicator of neoplastic risk conditions*, poster at UEGW 2010, Barcelona.
5. Pezzicoli, G. et al., *Perendoscopic real-time assessment of pH improves detection of gastric preneoplastic conditions*, Paper Accepted for Publication on *Minerva Gastroenter.*

Complete Bibliography and demo hospital application are available on website www.nisobiomed.com



FEATURES	
User-friendly operating modes	<ul style="list-style-type: none"> • Fully Automatic • Single Button Control
User Interface	<ul style="list-style-type: none"> • Vocal Report • Download Patient Archive and Reports onto USB pen drive • Touch Screen Data Display • Printed Results
H. Pylori Test Principle	Urease test based on an assay of ammonia ion concentration
Gastric Acidity Test	With pH Electrode
Washing Pump	High Capacity (600 ml/min)
Compatibility	With All Endoscopes
Insulation Class	Class 1 / Type BF
Classification	Ila / Directive 93/42/CEE (2007/47/CE)



CE
0123

Made in Italy



Via Ippolito Nievo, 25 Torino - Italy
www.nisobiomed.com



ISO 9001
ISO 13485